

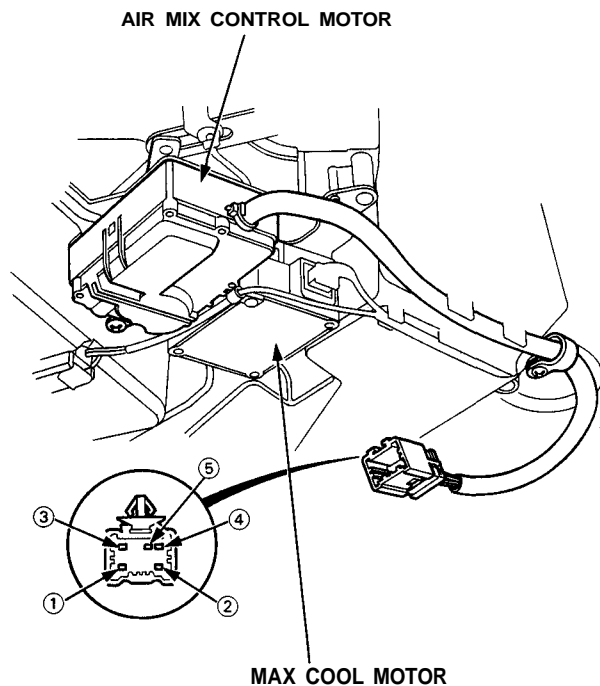
Air Mix Control Motor



Test

1. Measure the resistance between the No. 3 and 5 terminals.

● Resistance: approx. 6 k Ω



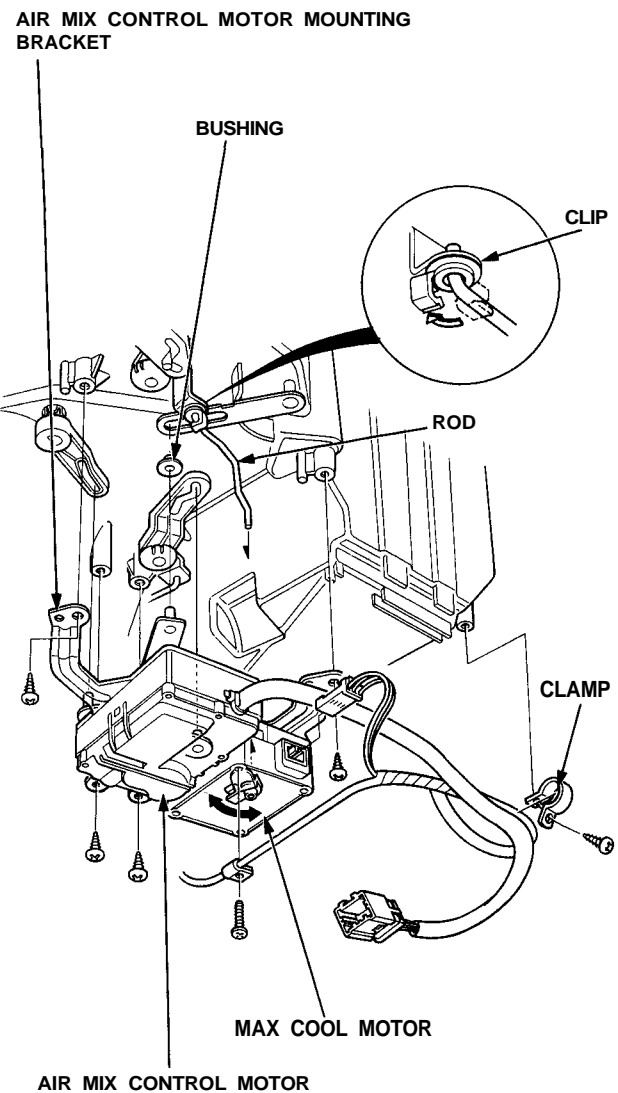
2. Check the motor operation by briefly connecting battery power to the No. 2 terminal and grounding the No. 1 terminal.
3. Reverse the wires to be sure the motor will run in both directions.

CAUTION: Be sure to disconnect power from the motor as soon as the motor has started. Failure to do so will damage motor.

4. While repeating step 2, measure the resistance between terminals No. 4 and No. 5. Resistance should be approx. 1.2k Ω at COOL and approx. 4.8 k Ω at HOT. Also check the resistances with the battery polarity reversed.

Removal

1. Remove the dashboard lower panel and disconnect the connector from it.
2. Disconnect the air mix control motor connector and clamp.



3. Unhook the clips from the max cool motor rod, then remove its mounting screws and the air mix control motor mounting bracket.
4. Remove the air mix control motor from the max cool motor as shown on the next page.